

# Academic Restructure briefing

Dr David Ashton, Deputy Principal (Operations)

Prof James Knowles, Vice-Principal and Dean

Robert Hall, Director of Academic Services

Erica Fairhurst, Head of Internal Communications

March 2019



ROYAL  
HOLLOWAY  
UNIVERSITY  
OF LONDON

# External context for a new structure



ROYAL  
HOLLOWAY  
UNIVERSITY  
OF LONDON



Department  
for Education

Review of Post-18 Education and Funding

Office for  
Students



OFS



**Student  
expectations**



**Demographic  
change**



# Internal reasons to change



- More consistent - we currently have 21 ways of doing things and we're not efficient
- Bring the Executive and Academic Departments closer together to improve collaboration and longer term strategic planning
- And therefore, improve the support we can provide to students and academic staff

# Creation of Schools



Faculties

Faculties

Faculties

School

School

School

School

School

School

21 Departments and Schools

# Heads of School Designate



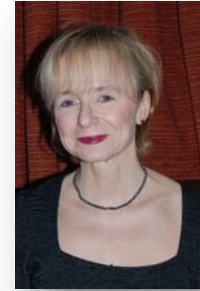
**School of  
Business and  
Management**

**Professor  
Gloria  
Agyemang**



**School of  
Engineering,  
Physical and  
Mathematical  
Sciences**

**Professor  
Stewart Boogert**



**School of  
Humanities**

**Professor  
Juliet John**



**School of  
Law and  
Social  
Sciences**

**Professor  
Matthew  
Humphreys**

**School of Life  
Sciences and the  
Environment**

**To be appointed**



**School of  
Performing  
and Digital  
Arts**

**Professor  
Jen Parker-  
Starbuck**

# Support for you - what will stay the same:



- Department structure and your Department Academics
- Personal Tutors
- Central services, for example:
  - Student Services
  - Student Advisory and Well Being
  - DDS
  - CEDAS
  - Careers Service
  - Student Services Centre in the EWD

# What will change for you



- Administrative support currently located in a Department Office will be moved to a new School Office.

# We hope the new model will be better for you



For example:

- The School Office will have more staff than any Department Office, so more people available – although shared by a students from a number of Departments (typically 4 Departments)
- School Office Helpdesks will be staffed for longer hours and will have more resilience to cover illness and holidays
- Joint honours students are more likely to be able to deal with one School Office
- Daily interaction with more students from all the Departments means School Offices will be more experienced in responding to everyday requests, as well more complicated ones.



# School Office Locations



ROYAL  
HOLLOWAY  
UNIVERSITY  
OF LONDON



- From 2019/20 the School Office will be in the **International Building, first floor** adjacent to the main entrance
- School of Humanities
  - Department of Classics
  - Department of English
  - Department of History
  - Department of Languages, Literatures and Cultures.



- From 2019/20 the School Office will be in the **Bedford Building, ground floor**
- School of Engineering, Physical and Mathematical Sciences
  - Department of Computer Science
  - Department of Electronic Engineering
  - Department of Information Security
  - Department of Mathematics
  - Department of Physics.



- From 2019/20 the School Office will be in the **McCrea Building, ground floor**
- School of Law and Social Sciences
  - Department of Economics
  - Department of Law and Criminology
  - Department of Politics, International Relations and Philosophy
  - Department of Social Work.



- From 2019/20 the School Office will be in the **Wolfson Building, ground floor**
- School of Life Sciences and the Environment
  - Department of Biological Sciences
  - Department of Earth Sciences
  - Department of Geography
  - Department of Psychology.



- From 2019/20 the School Office will be in the **Moore Building, ground floor**
- School of Business and Management
  - Department of Accounting and Financial Management
  - Department of Digital Innovation Management
  - Department of Human Resource Management and Organisational Studies
  - Department of Marketing
  - Department of Strategy, International Business and Entrepreneurship.



- School of Performing and Digital Arts
  - Department of Drama, Theatre and Dance
  - Department of Media Arts
  - Department of Music.
- From 2019/20 the main School Office will be in the **Katherine Worth building, ground floor**
- There will also be a Music Office in **Wetton's Terrace** and a Media Arts Office in the **Arts building**

# Administrative consultation update



ROYAL  
HOLLOWAY  
UNIVERSITY  
OF LONDON



# School creation timeline



Academic  
Administrative  
consultation  
ends  
20 March



Confirmation of  
Academic  
Administration  
roles to end  
March



March to  
September  
Heads of  
School and  
Katie  
Normington  
Deputy  
Principal  
(Academic)  
continue  
weekly School  
set up meetings  
and action  
planning



March to  
Summer  
The  
administrative  
support plan  
continues to be  
shaped working  
with Heads of  
School, Heads  
of Department  
and other staff



1 August School  
structures go  
live and roles  
are in place  
Summer 2019  
The work on  
the School  
Offices and  
Department  
moves takes  
place

# Questions



ROYAL  
HOLLOWAY  
UNIVERSITY  
OF LONDON